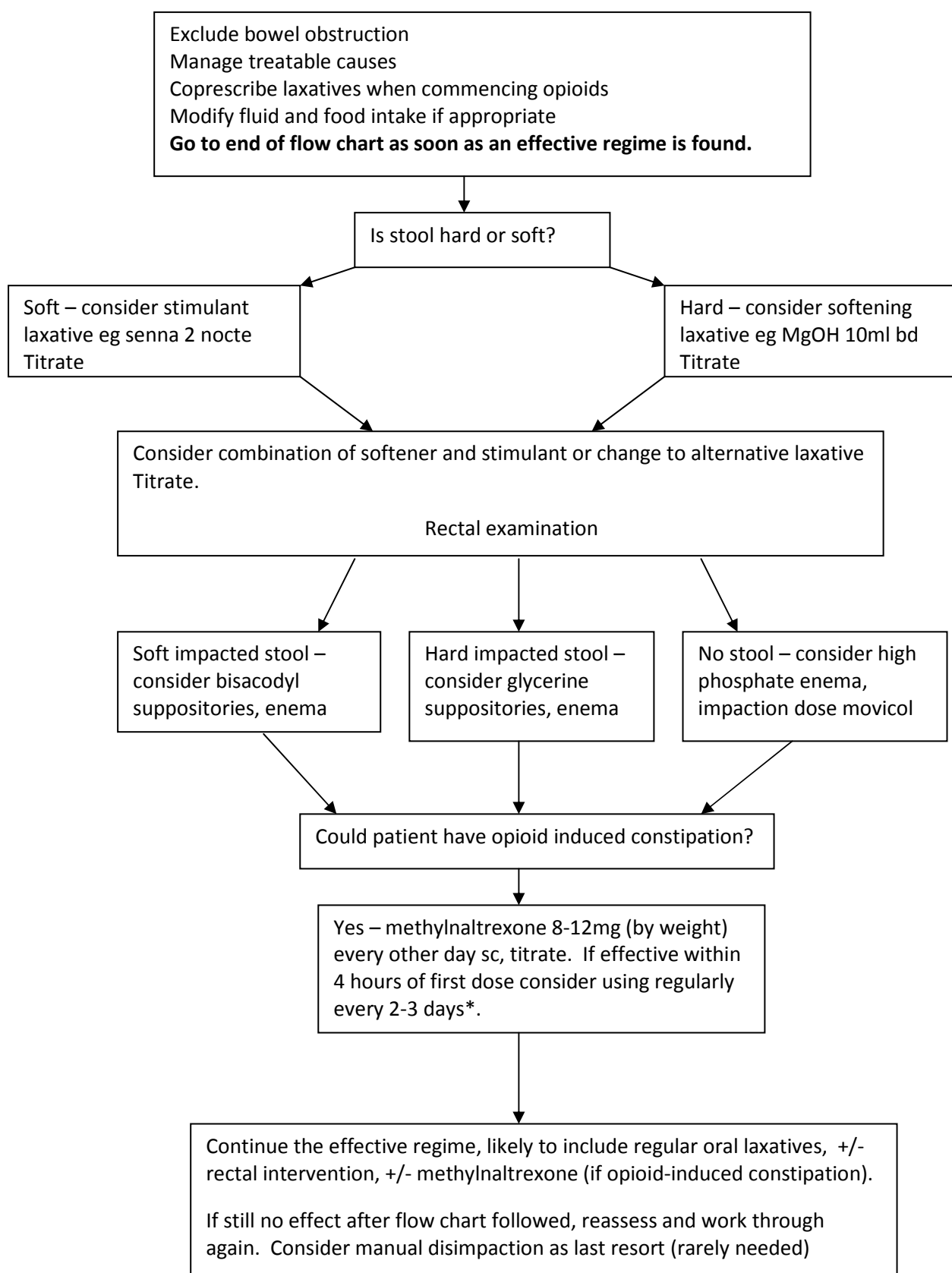


Constipation flow chart – Guidance for management



***some patients may need three trial doses, but most respond on first dose if they are going to.**

Katie Jerram, Staff Grade Doctor, The Rowans Hospice; Peter Sawyer, Medical Science Liaison, Wyeth Ref – PCF3 (Wilcox), Symptom Management in Advanced Cancer vol 3 (Wilcox, Twycross), Wyeth literature including Relistor Formulary July 2008

Dec 2008